

FOR LEASE



From \$1.50/SF/MO/NNN

491 N. Bluff Street, St. George, UT



PROPERTY FEATURES

Class A office space

3,000 SF available

3rd floor space

From \$1.50/PSF/ mo NNN

Immediate availability

On Building and Electric
Signage Available

FOR MORE INFORMATION:

GLEN MADSEN

(435) 688-8886 - OFFICE

(435) 229-9969 - CELL

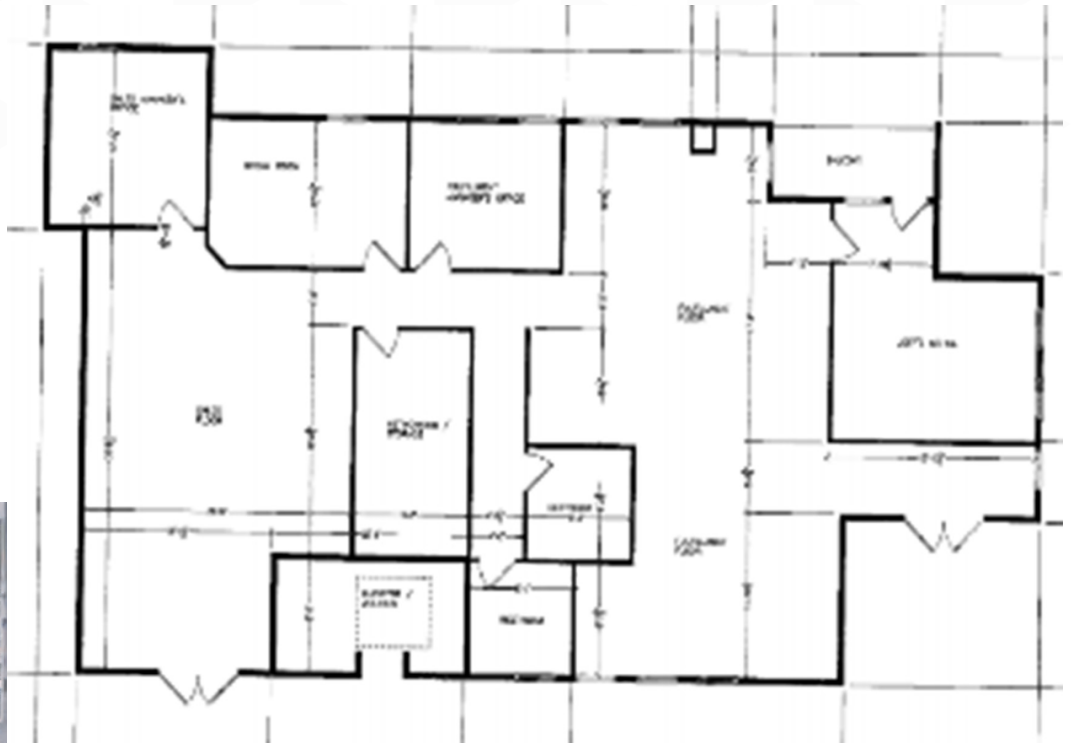
GLEN@VANTAGECRE.COM

This statement with the information it contains is given with the understanding that all negotiations relating to the purchase, renting, or leasing of the property described above shall be conducted through this office. The above information while not guaranteed has been secured from sources we believe to be reliable. Owned and Operated by Kemp Commercial, LC.

LOCATION



Executive Plaza offers an opportunity for a prestigious office/retail location. With its location on the newly expanded Bluff Street and 500 North, it offers easy access to the Central Business District, the Sunset Boulevard business corridor and I-15 freeway access.

Suite 303 & 304 AVAILABLE



**Suites must be
leased together**

FOR MORE INFORMATION:
GLEN MADSEN
(435) 688-8886 - OFFICE
(435) 229-9969 - CELL
GLEN@VANTAGECRE.COM

VANTAGE REAL ESTATE
50 EAST 100 SOUTH, SUITE 101
ST. GEORGE, UTAH 84770
WWW.VANTAGECRE.COM
FOLLOW US!  



www.vantagecre.com